



WOOLLY WINIFRED

Cross Stitch Chart

DESIGN SIZE (W x H):

Stitches: 59 x 65

Size: 10cm x 12cm / 3.93in x 4.72in

WHAT YOU'LL NEED: -

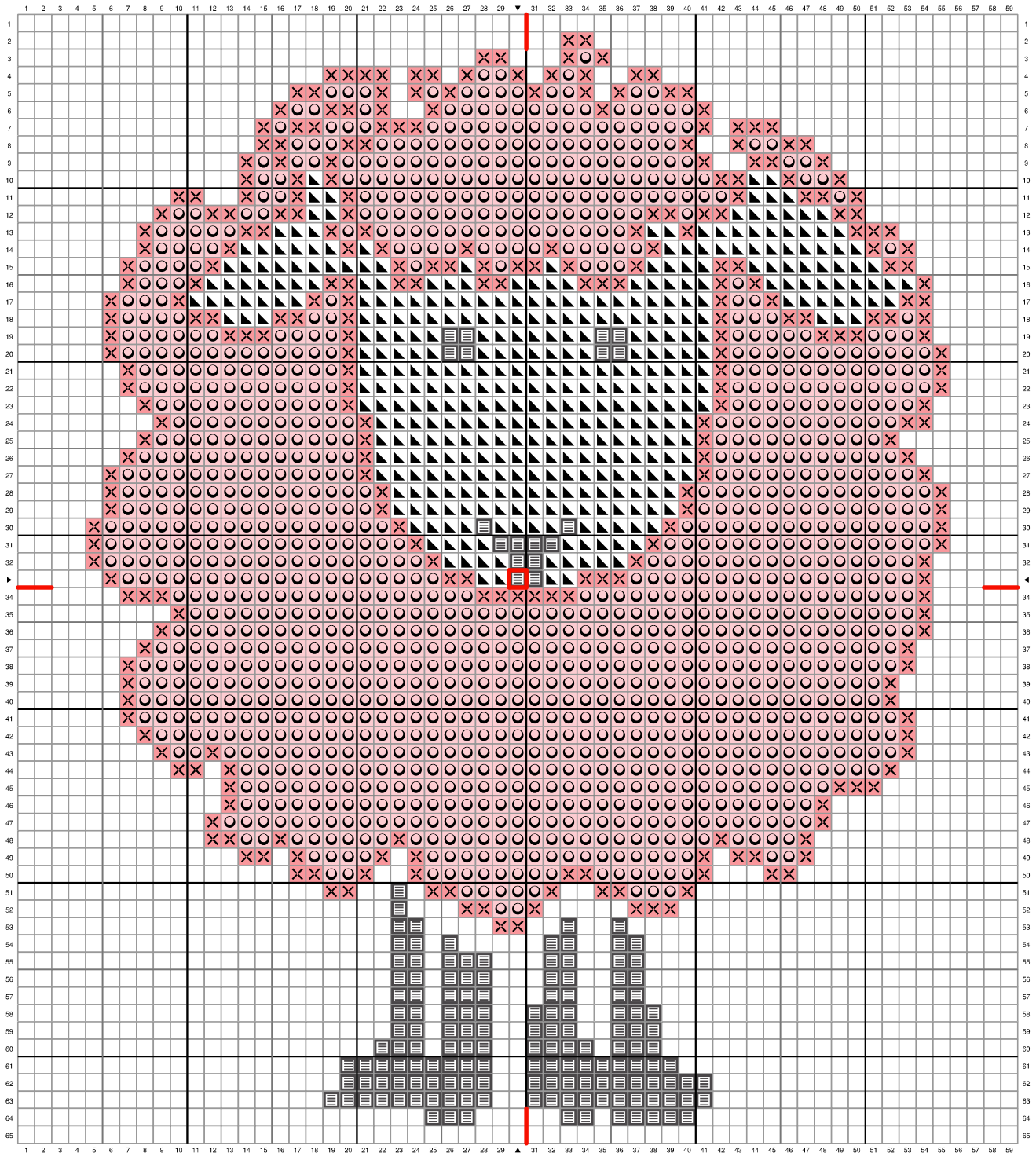
- 14-Count Aida
- Size 24 Cross Stitch Needle
- DMC Stranded Cottons (Listed underneath pattern, one skein of each required – use TWO strands of thread for stitching)
- Scissors





OPTIONAL ITEMS: -

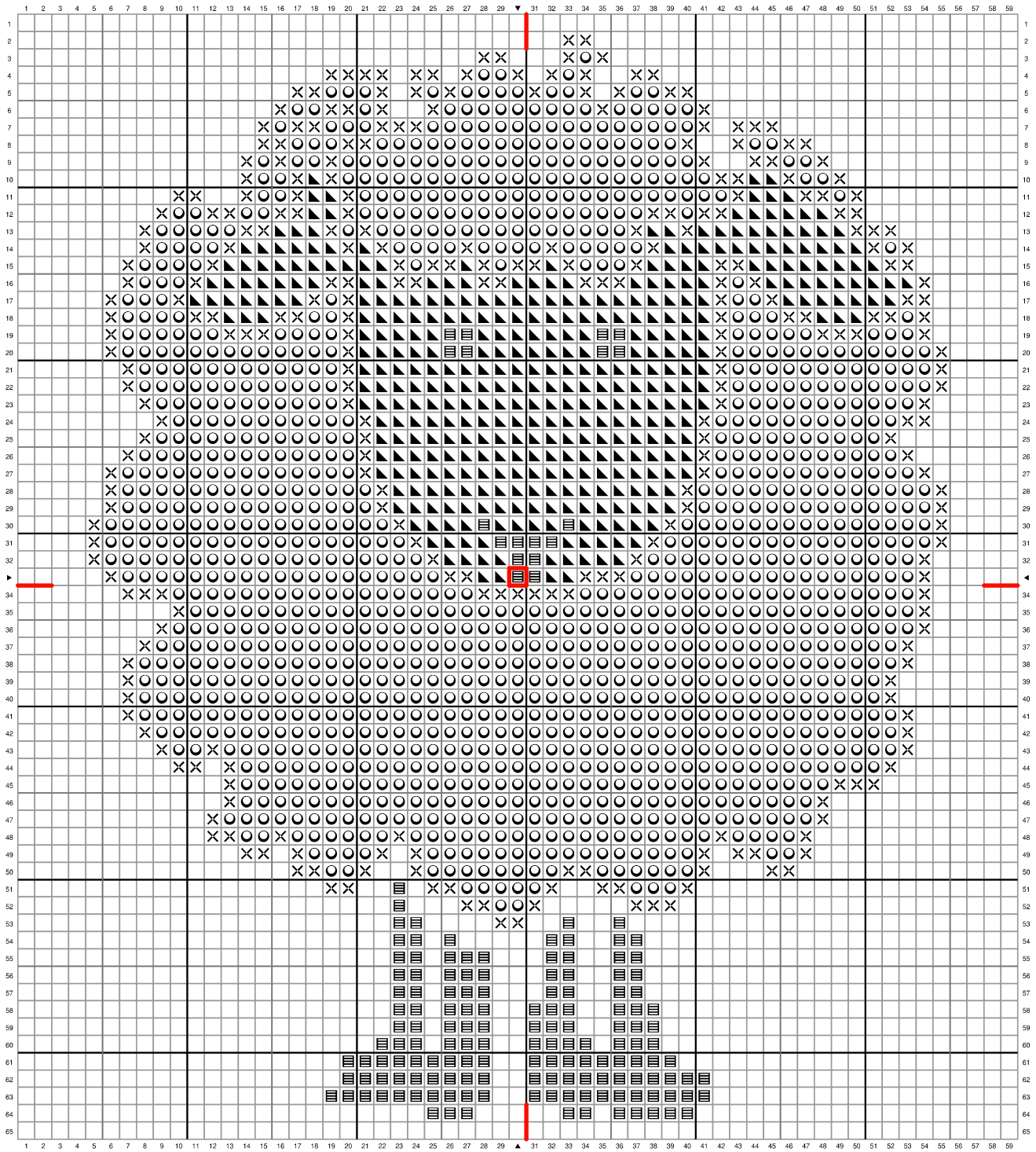
- Embroidery Hoop
- Needle Minder
- Your favourite snack and drink!





For tips on how to get started, be sure to visit our blog.

We also love to see your WIPs and what you're making; post your photos and use #WoolWarehouseCrafters and we'll showcase some of our favourites!



-  DMC 413 - Dark Pewter Gray
-  DMC 3326 - Light Rose
-  DMC 963 - Ultra Very Light Dusty Rose
-  DMC B5200 - Snow White



-  DMC 413 - Dark Pewter Gray
-  DMC 3326 - Light Rose
-  DMC 963 - Ultra Very Light Dusty Rose
-  DMC B5200 - Snow White